



**Protect your
Endpoint Data.
Back up Files to
Google Drive.**

BluVault
for Backup to
Google Drive

BluVault for backup to Google Drive

Parablu's award-winning endpoint backup solution helps you make the most of your Google Workspace (Formerly G Suite) subscription by utilizing Google Drive as a secure backup storage target. Parablu's patented technology has the ability to create a safe, encrypted, private vault within Google Drive in which your user endpoint data backups can be stored. It is safe, reliable, and it uses your existing Google Drive subscription. Achieve 100% data security without paying a penny for additional storage.



Key Features

Backup to Google Drive

Parablu's BluVault enables you to back up files and folders from your user endpoints and store them in your existing Google Drive storage account. Apart from lowering your storage costs, BluVault creates an automated, and encrypted backup of all files and folders into this space.

Fully Encrypted Backup

Industrial-strength encryption combined with data shredding ensures your data is rendered indecipherable to unauthorized users – both during transit and at rest. You control the encryption keys, not us, not Google, not anyone else.

Policy-based Automated Backup

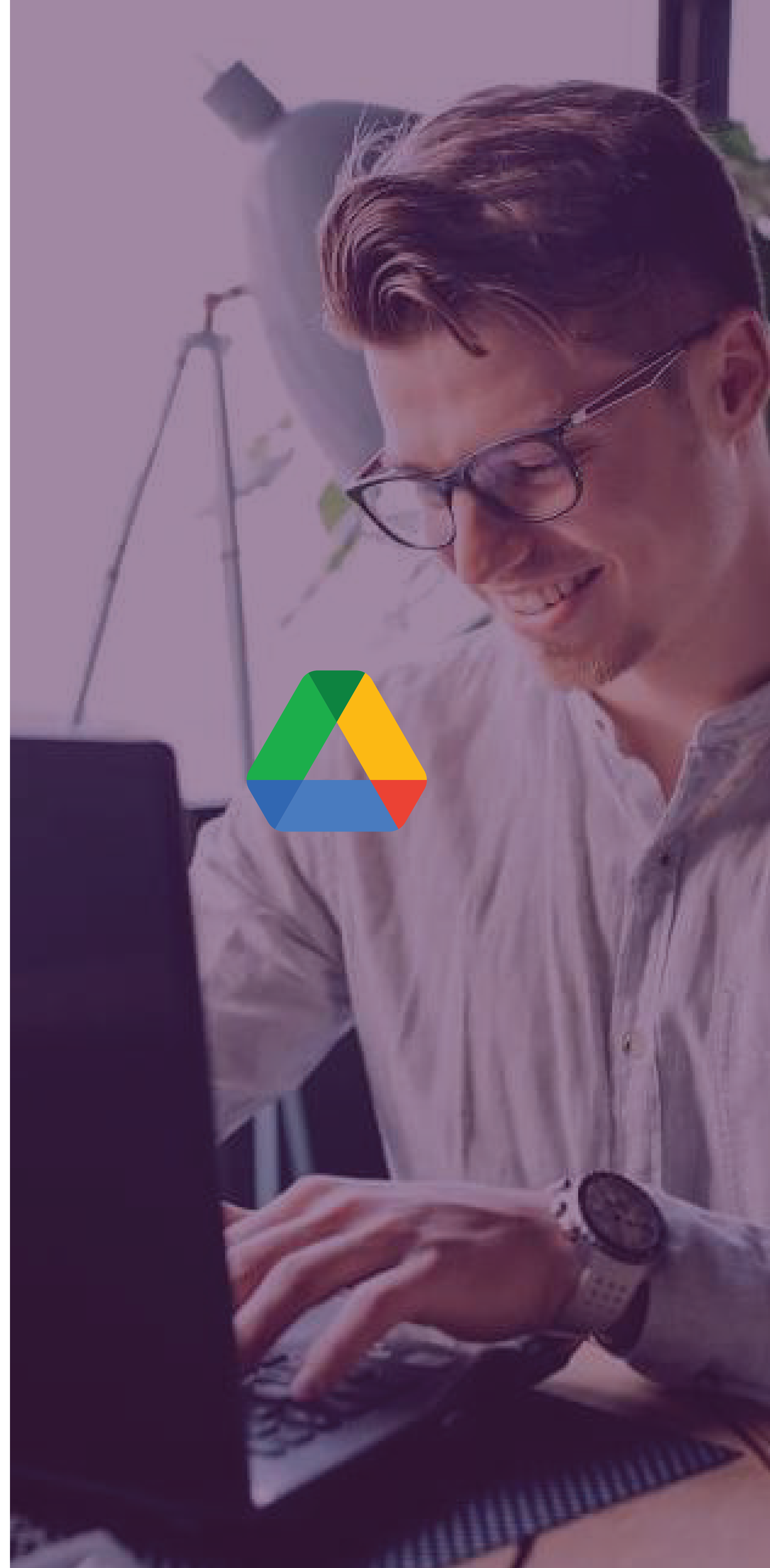
BluVault's policies are designed to support and empower enterprise IT administrators by allowing them to exercise centralized control over backups, restores, reports, and audit logs.

Transparent Reporting

One-click activity reporting on the dashboard ensures you can always track, analyze and manage the movement of your data with a bird's eye view.

Network and Storage Bandwidth Sensitive Backup

High-performance compression of data combined with variable length block-level de-duplication optimizes for storage use as well as network bandwidth consumption. BluVault's built-in option to throttle network usage ensures optimized use of available network bandwidth.



Lower Storage Cost

Parablu's ability to leverage your Google Drive subscription translates into vastly reduced spending on additional storage and could save an organization as much as 70% in total cost of ownership for a backup solution, over a 3-5 year period.

Other BluVault Features:

Any File, any folder

Parablu backs up data to Google Drive, no matter where that data lives on the endpoint – not just a specific folder or set of folders. No limitations based on types of files, sizes, or names.

Partial File Transfer

BluVault's endpoint backup agent has specialized algorithms to handle large files such as PSTs. It can detect modified content inside a file and send over only changed data instead of the entire file on subsequent incremental backups.

Curated Recovery

BluVault offers the capability to automatically identify only those files which were deleted by ransomware or a malicious insider, during a specific interval of time. This option to surgically bring back deleted data can dramatically cut down restoration effort and time when trying to recover from a ransomware attack or malicious deletion.

Zero Trust Security

At Parablu, we take security very seriously. BluVault is built on the tenet of Zero Trust. Centralized Identity Management, Secure Single Sign-On (SSO), Multi-Factor Authentication, and Principle of Least Privilege are all designed into the solution.

Industrial-strength Data Encryption

BluVault ensures critical data is encrypted - both at rest as well as during transit. All data at rest is encrypted using industrial-strength AES-256 encryption while data in flight is always transmitted using at least TLS 1.2 with strong ciphers. Also, by combining strong encryption with a strict enforcement of segregation of duties, you can ensure that your data is accessible ONLY to your organization. Not to the cloud vendor, or even Parablu!

Incremental Backups Forever

After an initial full backup of enterprise Google Drive data, BluVault subsequently copies only changed data, making for highly optimized storage and network usage.

Management Dashboard

Administrators can use a web-based management dashboard to control backup activities centrally. It offers a quick and easy way to configure or manage backups and recovery behavior.

Self-service with Administrator Oversight

BluVault's easy-to-use interface offers the flexibility to allow end-users to perform a number of actions themselves, like decide what to backup, discover how protected their files are, and do their own restores. But administrators can dial up or down self-service features using policies and can allow varying degrees of self-service based on class of the user.

CPU Throttling

Allows administrators to control the impact the Parablu agent has on the endpoint by adjusting CPU usage levels up or down.

Network Bandwidth Optimization

BluVault helps administrators control the endpoint agent's use of valuable network bandwidth using the built-in network throttling feature.

File Versions

BluVault has built-in file versioning which by default stores unlimited versions of all data that is backed up. However, it allows the backup administrator the option to set a fixed number of versions and control the aging/retention of data based on policy.

Enterprise Audit Trail

BluVault is completely auditable. All touchpoints on the system get audited automatically. Parablu's easy-to-use dashboard and granular reports make backup management a cinch.

Litigation Hold

Allows administrators to assign special policies to identified users which align with Legal/Litigation Hold requirements.

Delegated Administration Capability

Administrative roles with limited permissions can be assigned to selected users to allow them to perform specific administrative operations.

Administrator Approved Deletion

Allows an Administrator to delete specific user files and folders from backup storage. Critical for GDPR compliance and to satisfy users' "right to be forgotten". Actions are audit-logged for compliance reasons.

The Parablu Advantages

Lower Storage Cost

Parablu BluVault's ability to leverage your Google Drive subscription translates into the business spending less on buying additional cloud storage, saving as much as 70% in total cost of ownership.

Protection From Ransomware

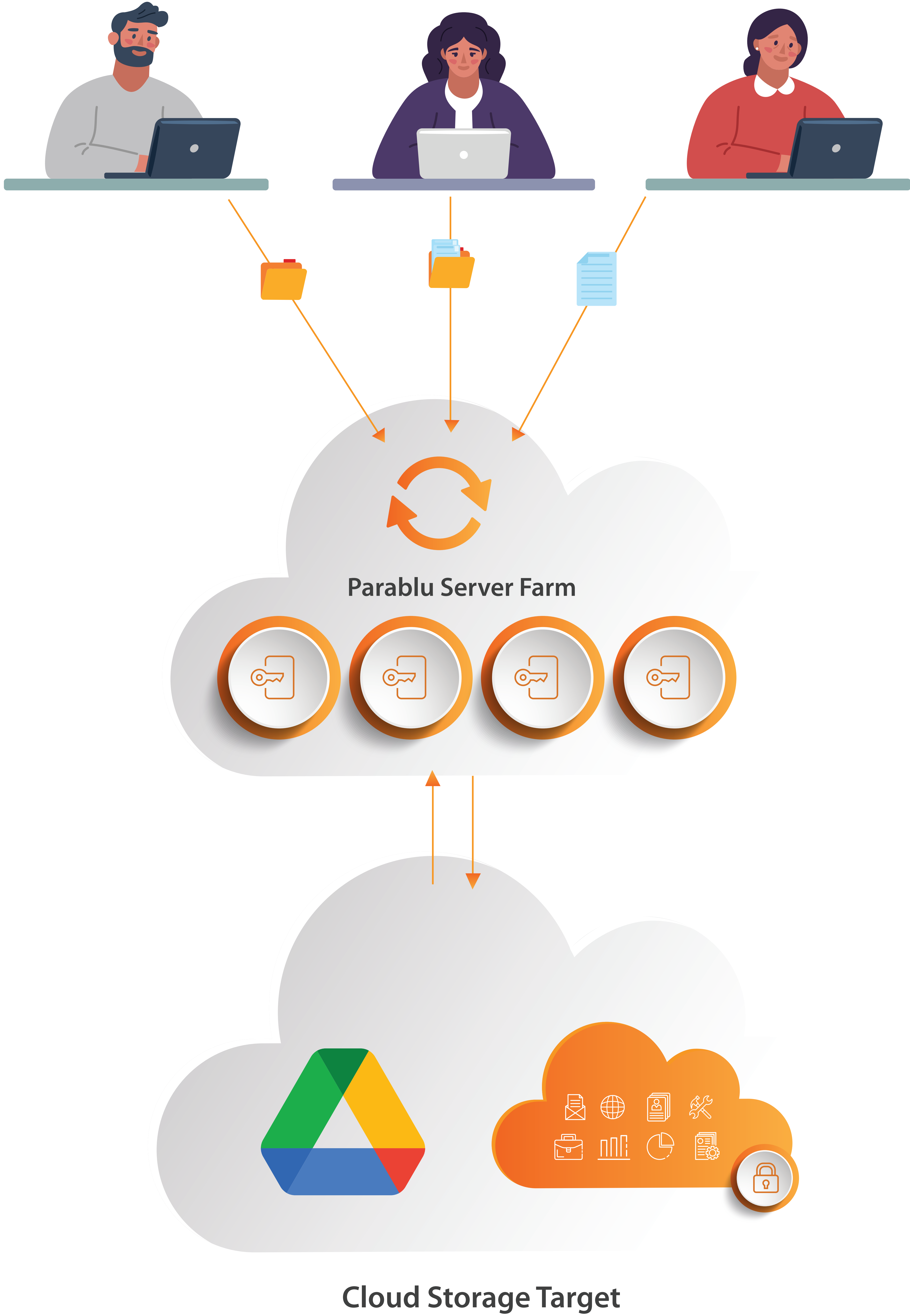
With BluVault, you can eliminate the need to negotiate with ransomware attackers. With a secure copy of your data and the knowledge that you can recover your data from any previous point-in-time, you can control your own destiny and not be held hostage. BluVault boasts an array of features designed to defend businesses from ransomware – ranging from Unusual Activity Detection, curated point-in-time restores, cloud-to-cloud restores, as well as device and file quarantining features. In summary, BluVault is designed to ensure that a redundant data copy is available, uncompromised, and ready for quick recovery.

Protection against Insider Threats

BluVault ensures a tamper-proof backup copy, insulated from changes made on the endpoint. This is important to protect against accidental deletion, and insider threats.

Meet Compliance Requirements

Parablu solutions are designed to help you meet the requirements of most global data protection and data privacy mandates, including GDPR.



About Parablu

Parablu is a leading provider of data security and resiliency solutions for the digital enterprise. These solutions protect enterprise data completely and provide total visibility into all data movement through centrally managed intuitive dashboards. Parablu's products include BluVault – a suite of powerful and secure data backup solutions designed for the cloud and BluSync™ – a suite of solutions designed for secure managed file transfer, secure collaboration, and file services. Both the solutions holistically address enterprise data protection needs and can be easily bridged with existing infrastructure – offering cost-effective data protection overall.